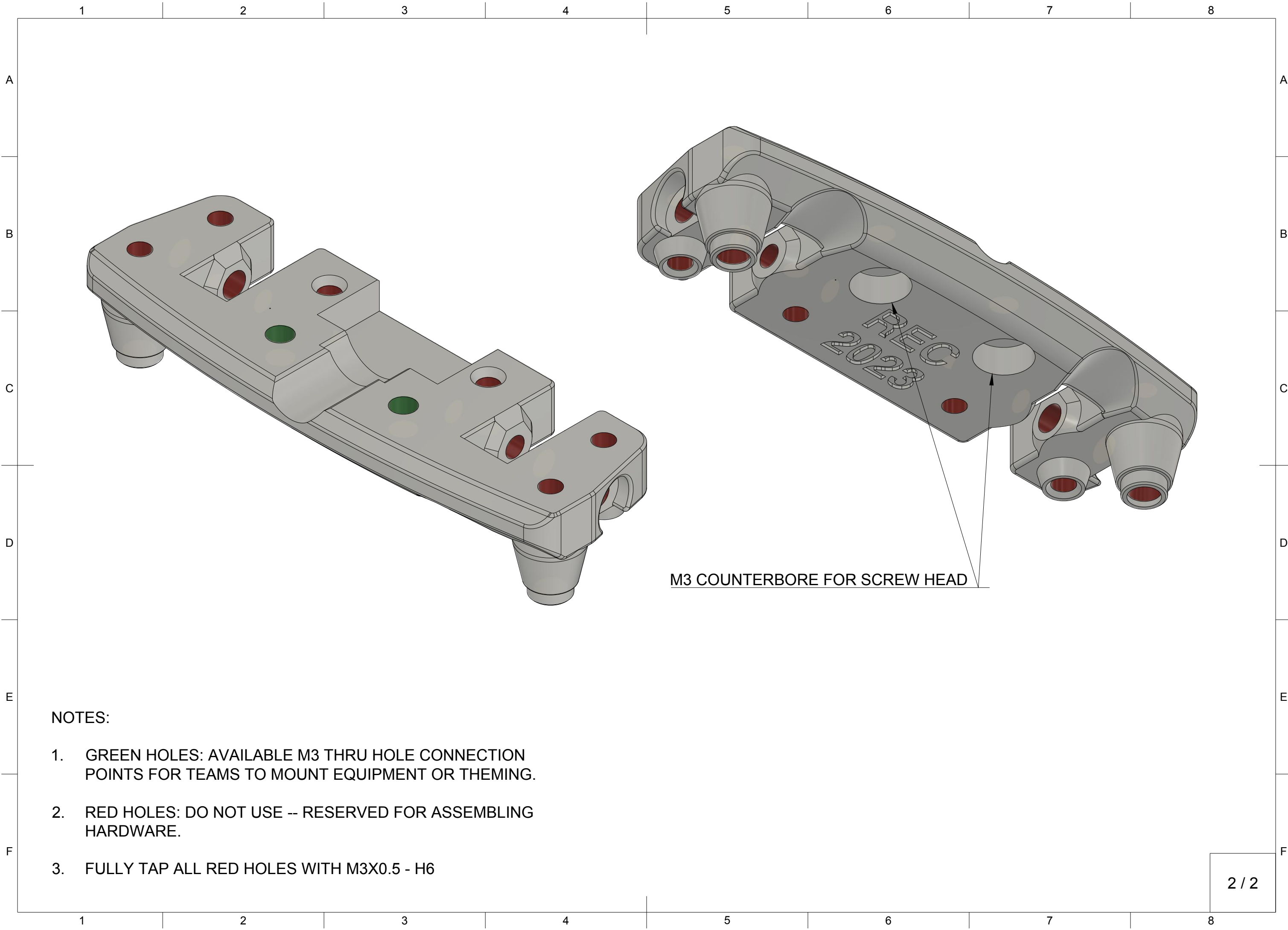


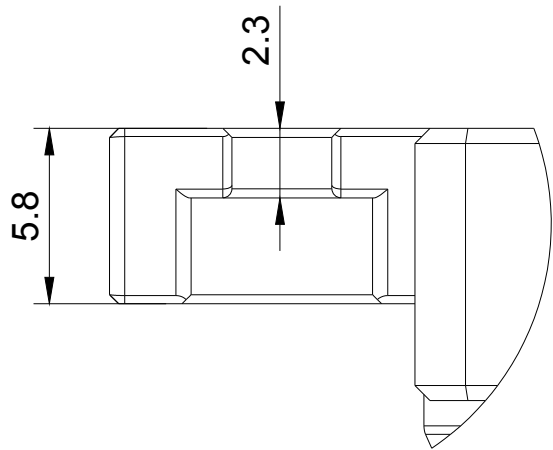
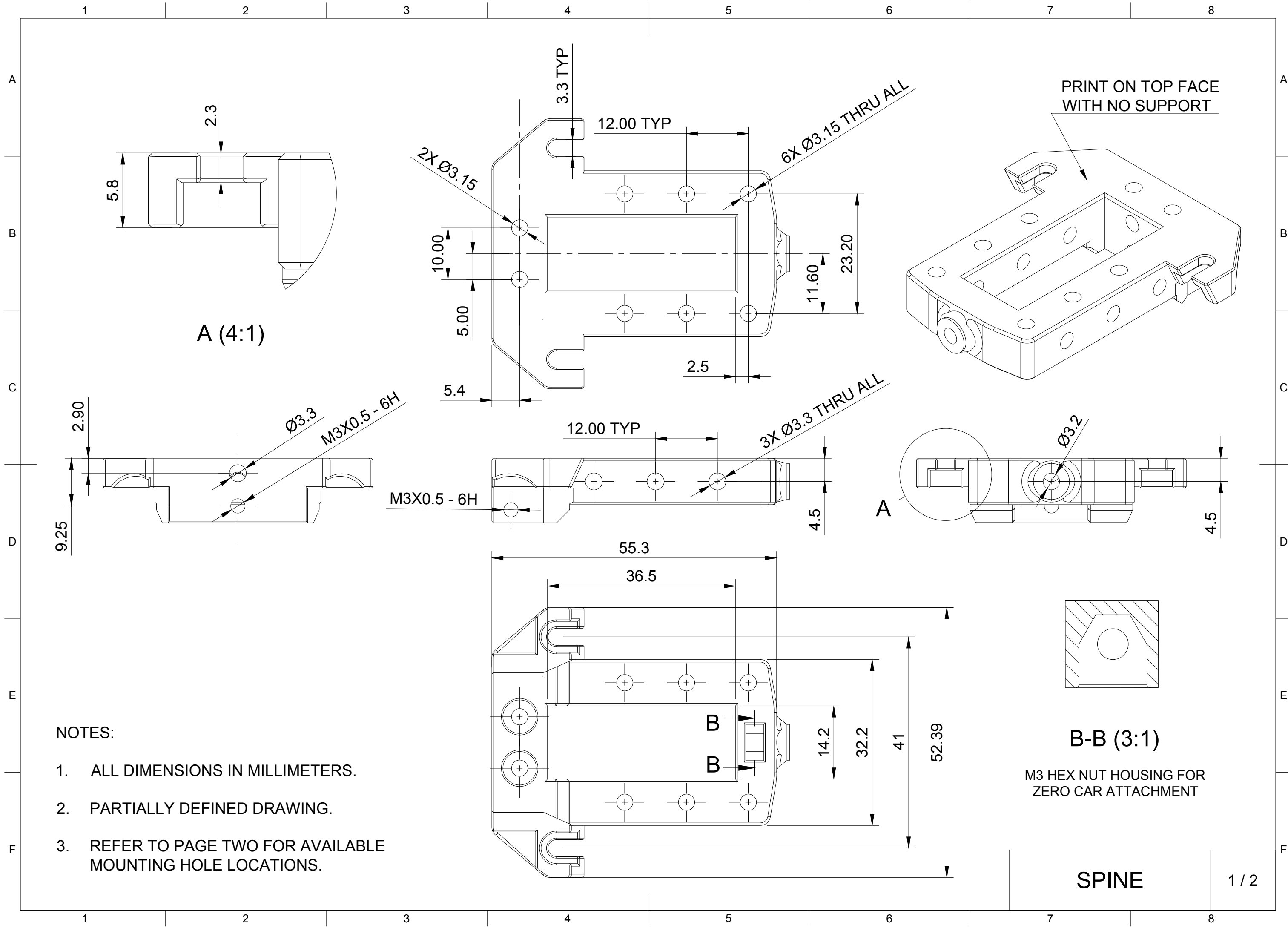
NOTES:

- 1. ALL DIMENSIONS IN MILLIMETERS.
- 2. PARTIALLY DEFINED DRAWING.
- 3. REFER TO PAGE TWO FOR AVAILABLE MOUNTING HOLE LOCATIONS.

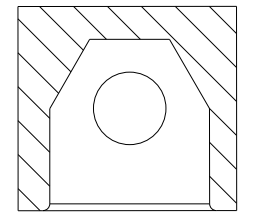
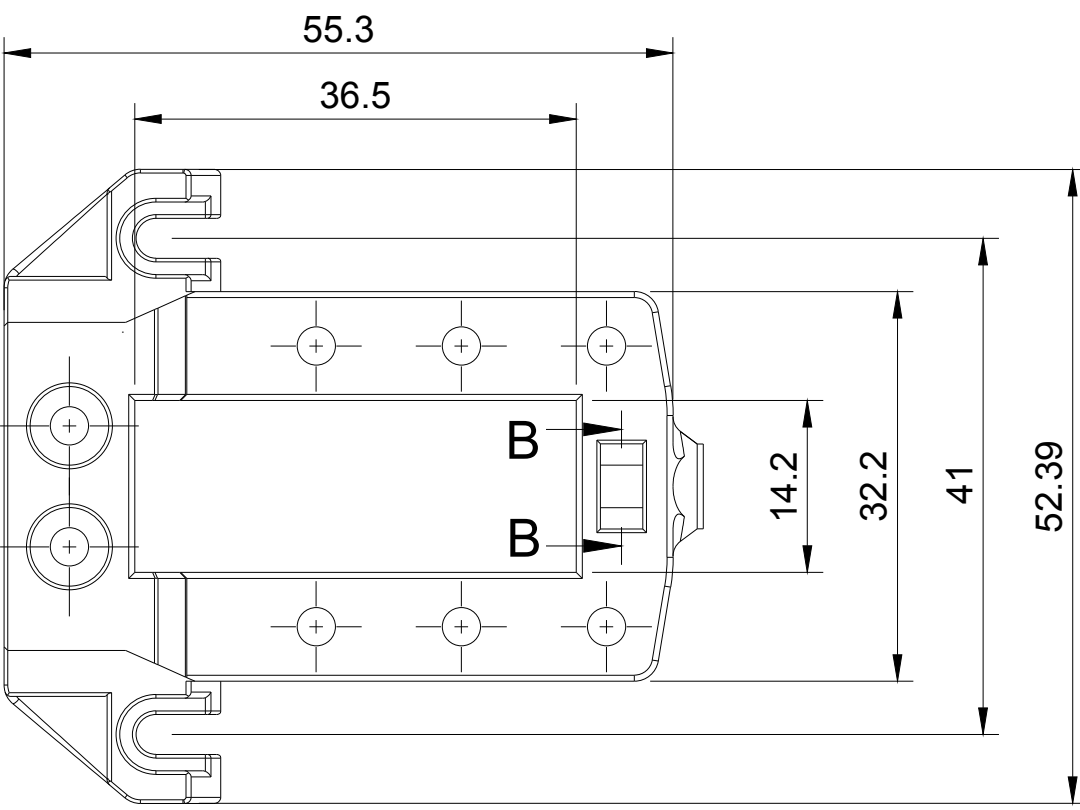
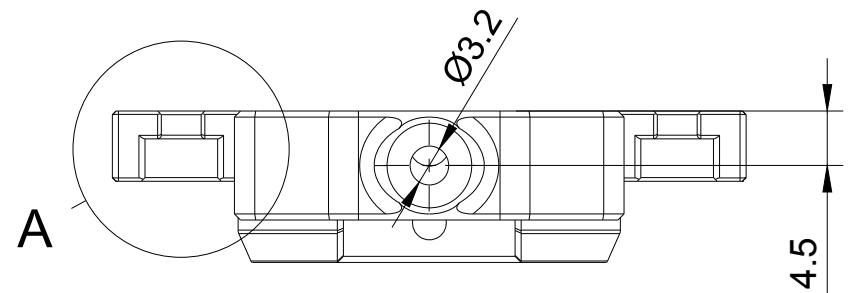
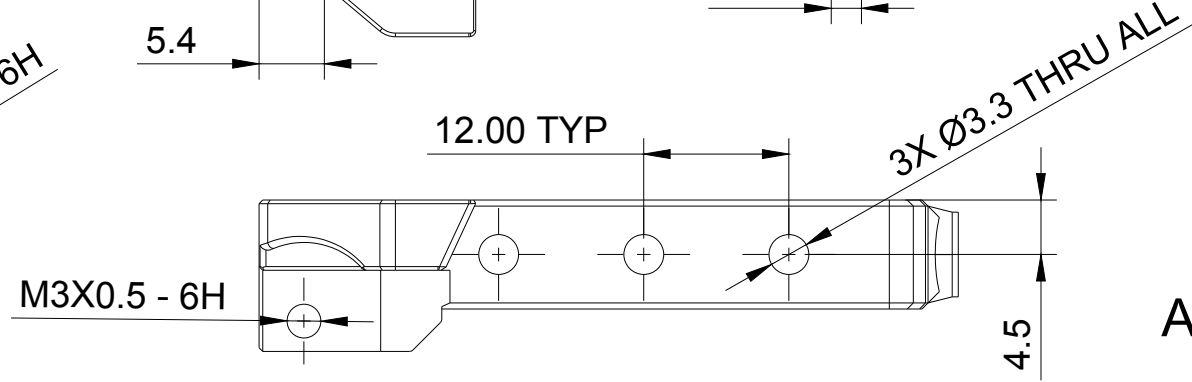
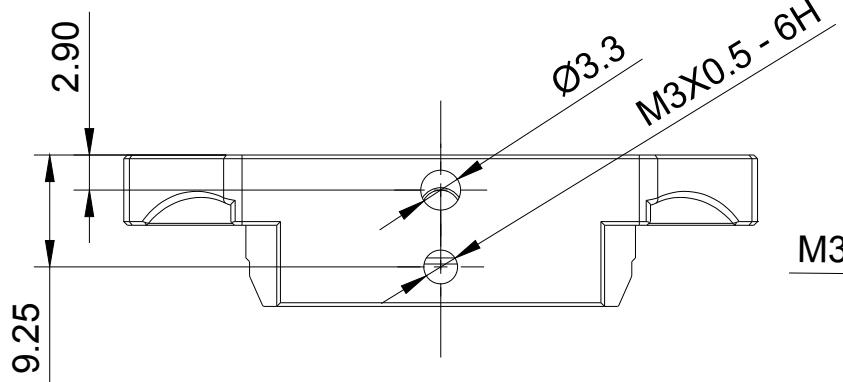
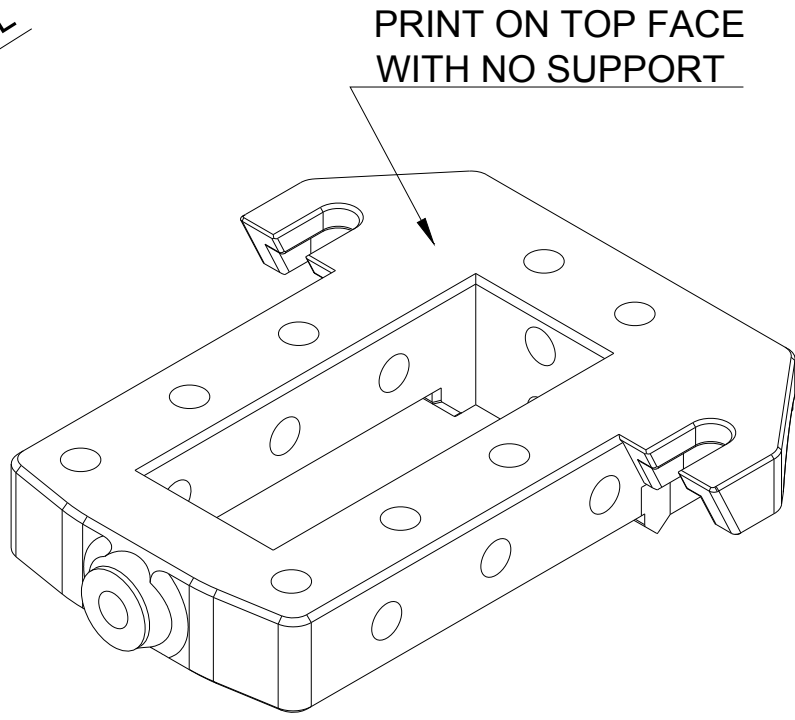
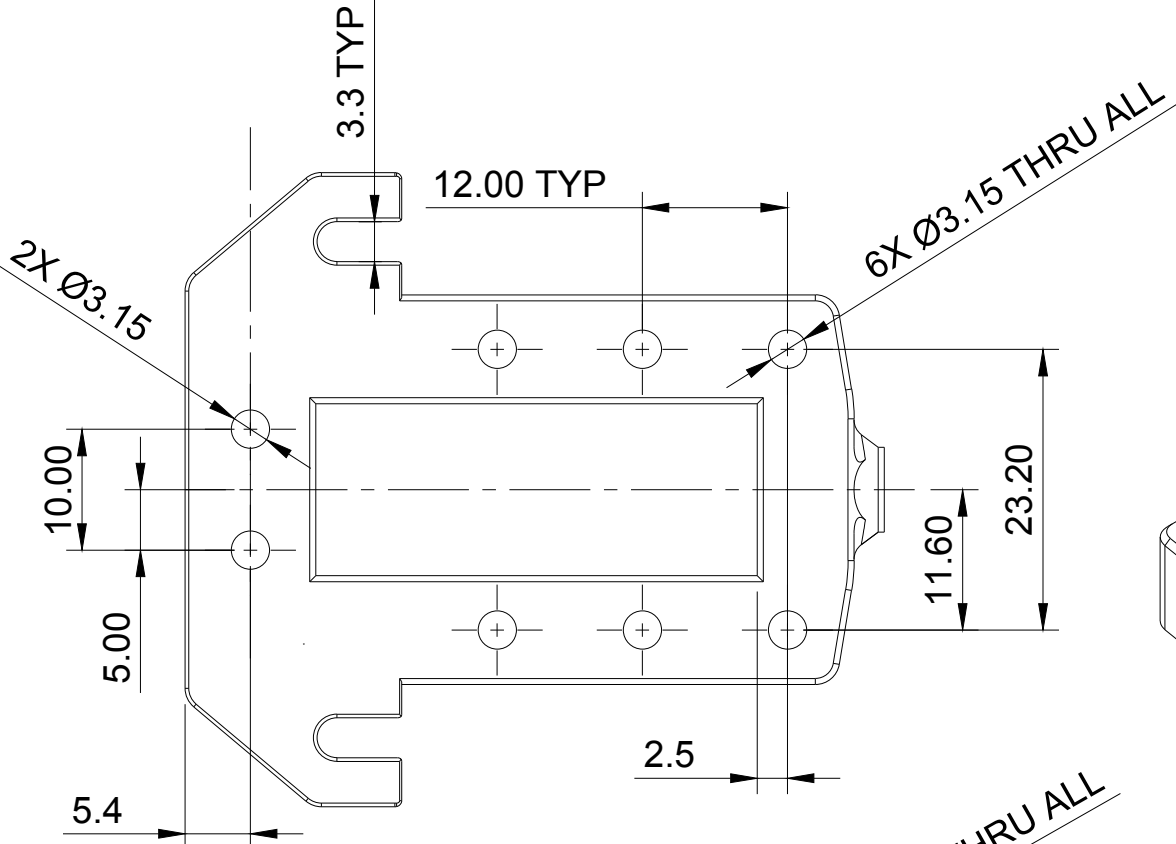


NOTES:

1. GREEN HOLES: AVAILABLE M3 THRU HOLE CONNECTION POINTS FOR TEAMS TO MOUNT EQUIPMENT OR THEMING.
2. RED HOLES: DO NOT USE -- RESERVED FOR ASSEMBLING HARDWARE.
3. FULLY TAP ALL RED HOLES WITH M3X0.5 - H6



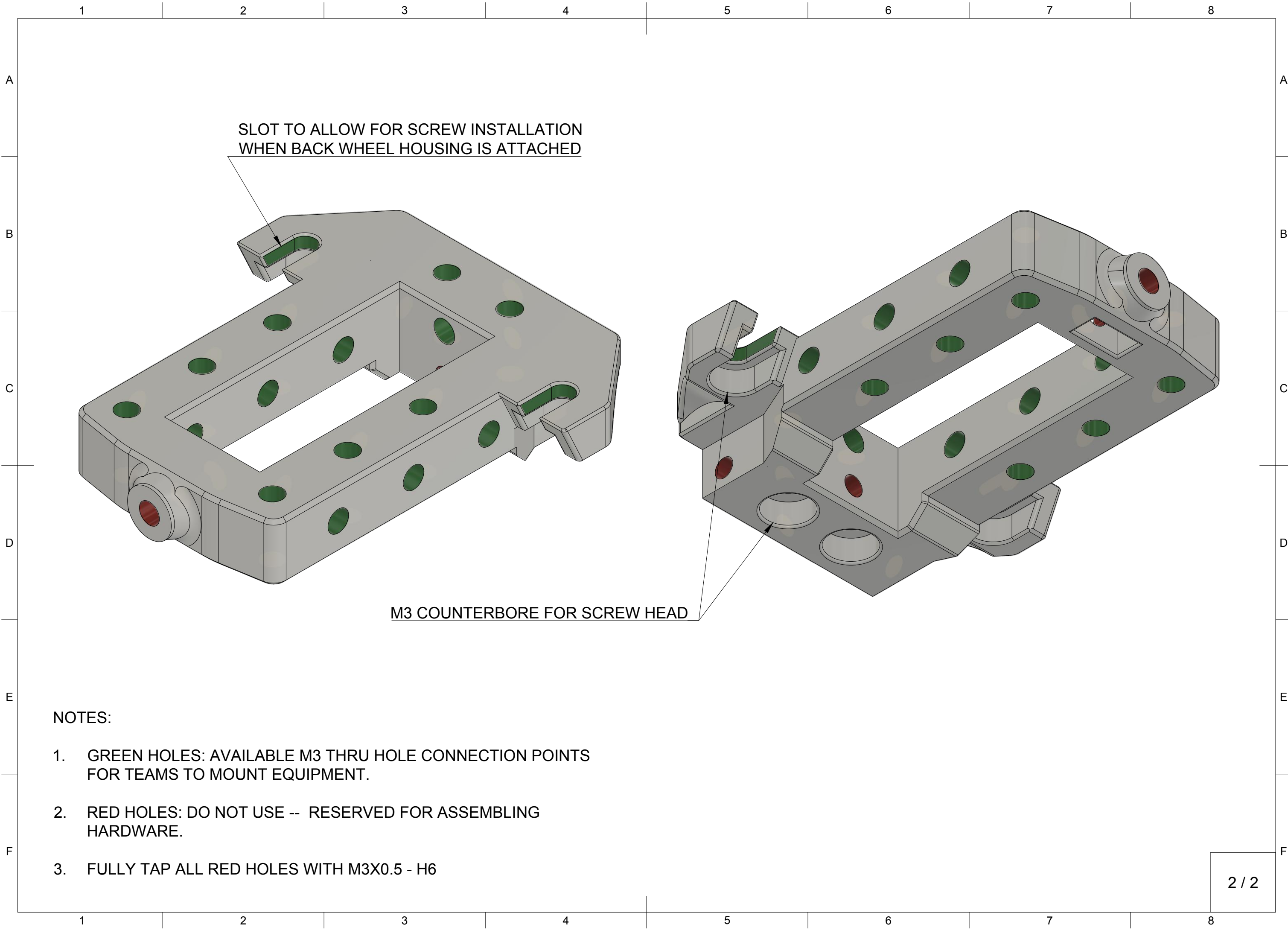
A (4:1)



B-B (3:1)

M3 HEX NUT HOUSING FOR ZERO CAR ATTACHMENT

- NOTES:
1. ALL DIMENSIONS IN MILLIMETERS.
 2. PARTIALLY DEFINED DRAWING.
 3. REFER TO PAGE TWO FOR AVAILABLE MOUNTING HOLE LOCATIONS.

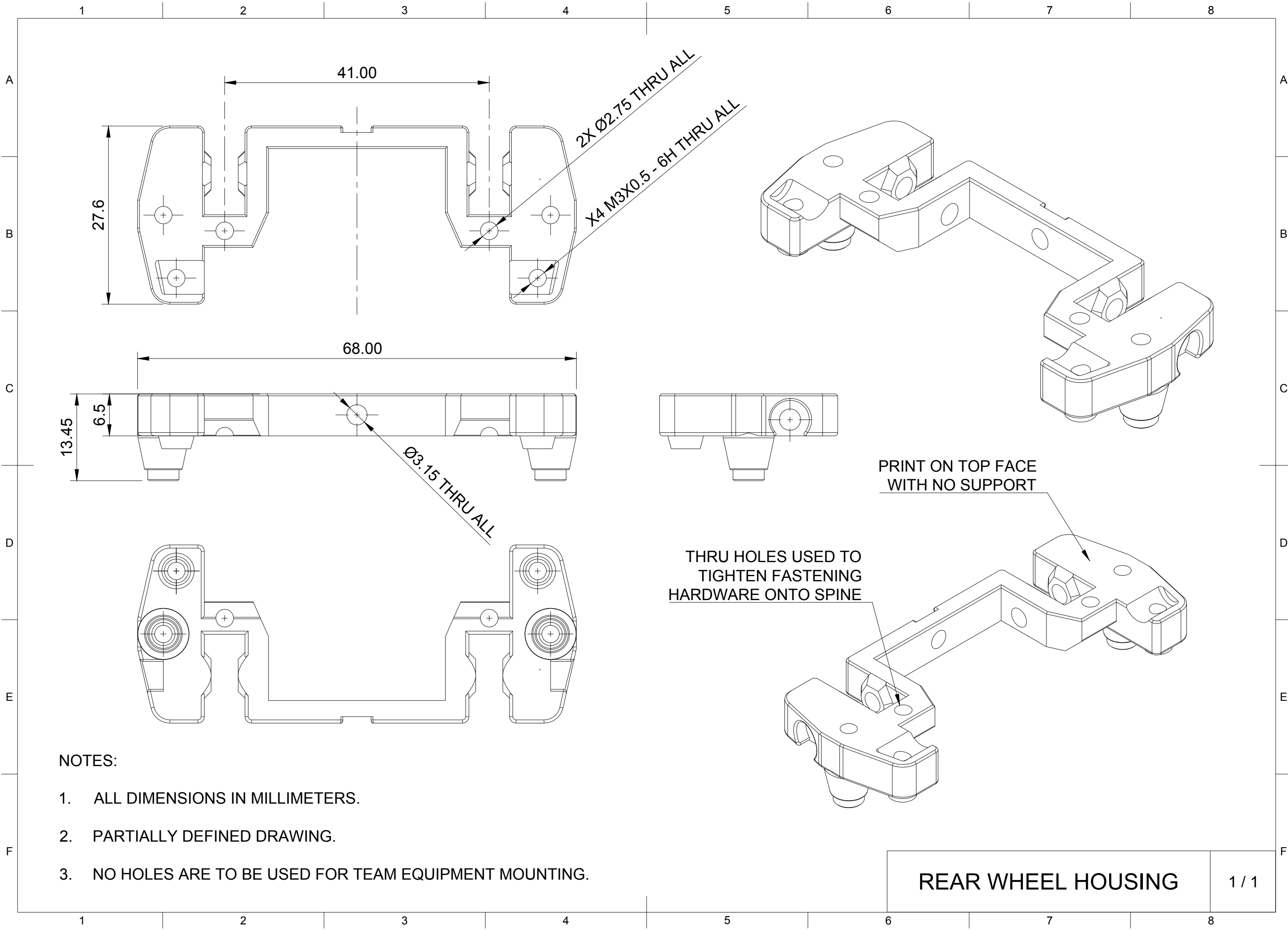


SLOT TO ALLOW FOR SCREW INSTALLATION
WHEN BACK WHEEL HOUSING IS ATTACHED

M3 COUNTERBORE FOR SCREW HEAD

NOTES:

- 1. GREEN HOLES: AVAILABLE M3 THRU HOLE CONNECTION POINTS FOR TEAMS TO MOUNT EQUIPMENT.
- 2. RED HOLES: DO NOT USE -- RESERVED FOR ASSEMBLING HARDWARE.
- 3. FULLY TAP ALL RED HOLES WITH M3X0.5 - H6



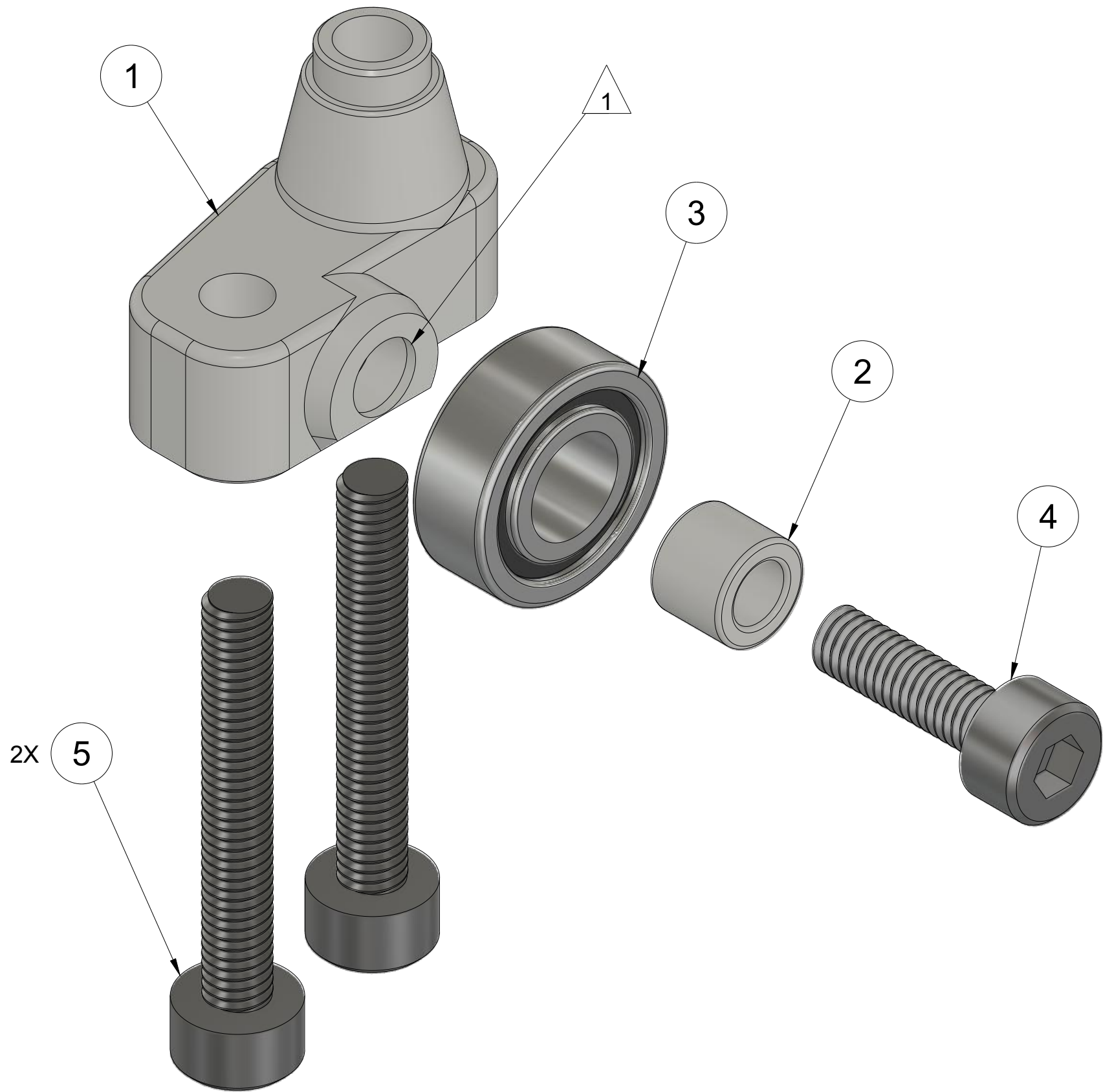
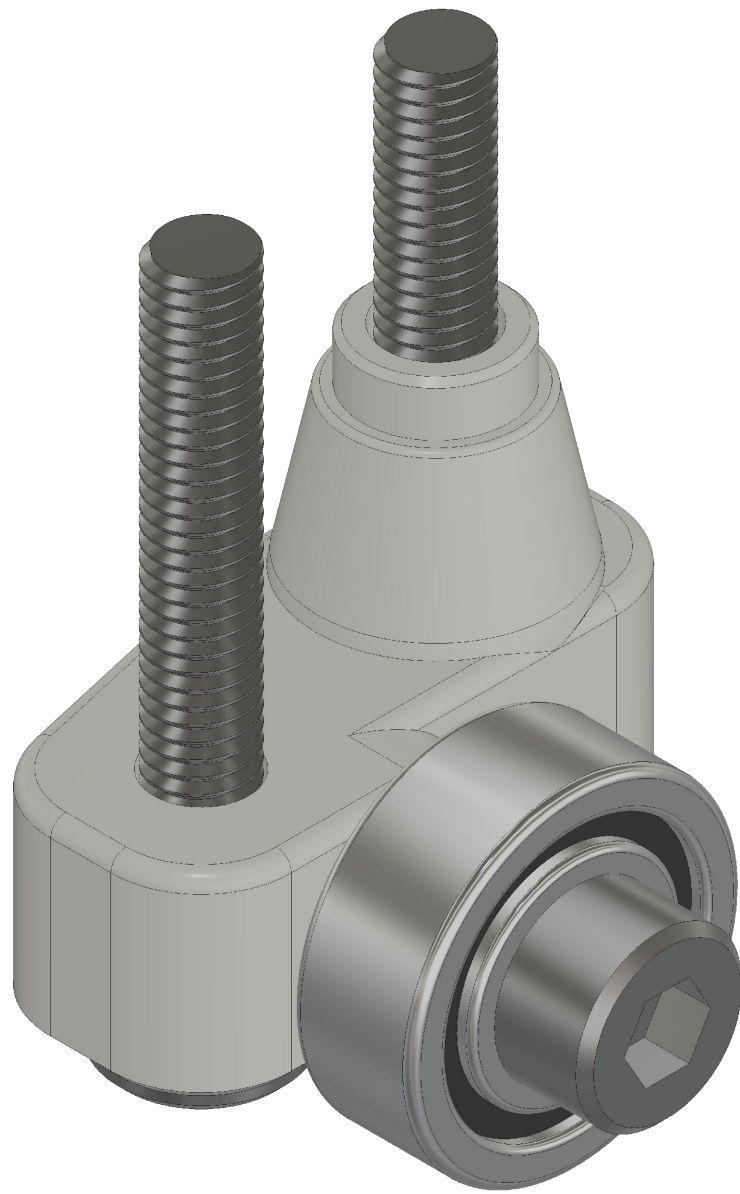
NOTES:

- 1. ALL DIMENSIONS IN MILLIMETERS.
- 2. PARTIALLY DEFINED DRAWING.
- 3. NO HOLES ARE TO BE USED FOR TEAM EQUIPMENT MOUNTING.

PRINT ON TOP FACE
WITH NO SUPPORT

THRU HOLES USED TO
TIGHTEN FASTENING
HARDWARE ONTO SPINE

Parts List		
Item	Qty	Description
1	1	Front Upstop Housing
2	1	Bearing Spacer
3	1	11x5x4 Bearing
4	1	M3X10
5	2	M3X20



NOTES:

1. FULLY TAP BEFORE FASTENING.
2. TORQUE TO HAND TIGHT. DO NOT OVER TORQUE.
3. USE SAME ASSEMBLY PROCEDURE FOR BOTH LEFT AND RIGHT UPSTOP WHEEL HOUSINGS.

1 2 3 4 5 6 7 8

Parts List

Item	Qty	Description
1	1	Rear Upstop Housing
2	1	Bearing Spacer
3	1	11x5x4 Bearing
4	1	M3X10
5	2	M3X20

A

A

B

B

C

C

D

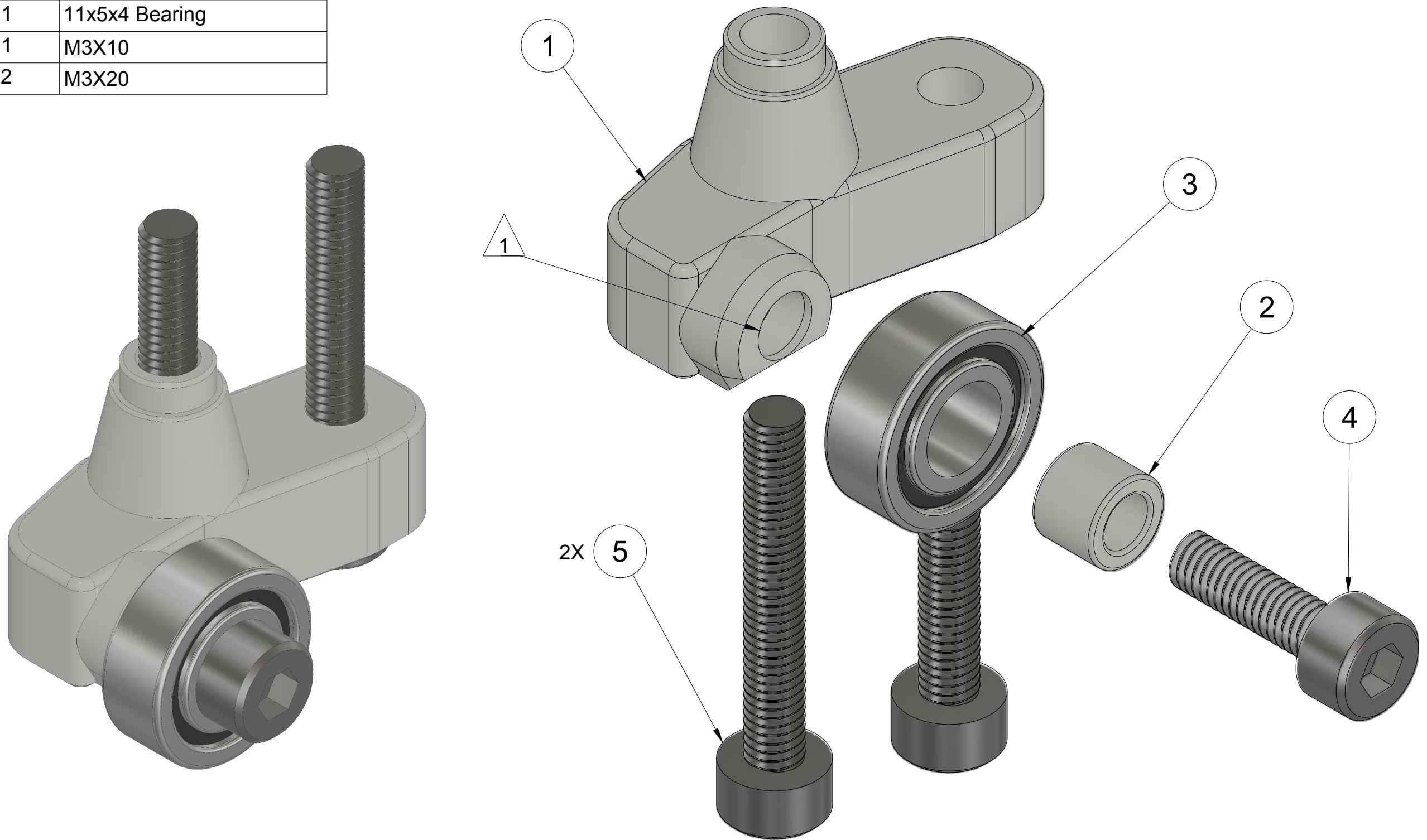
D

E

E

F

F



NOTES:

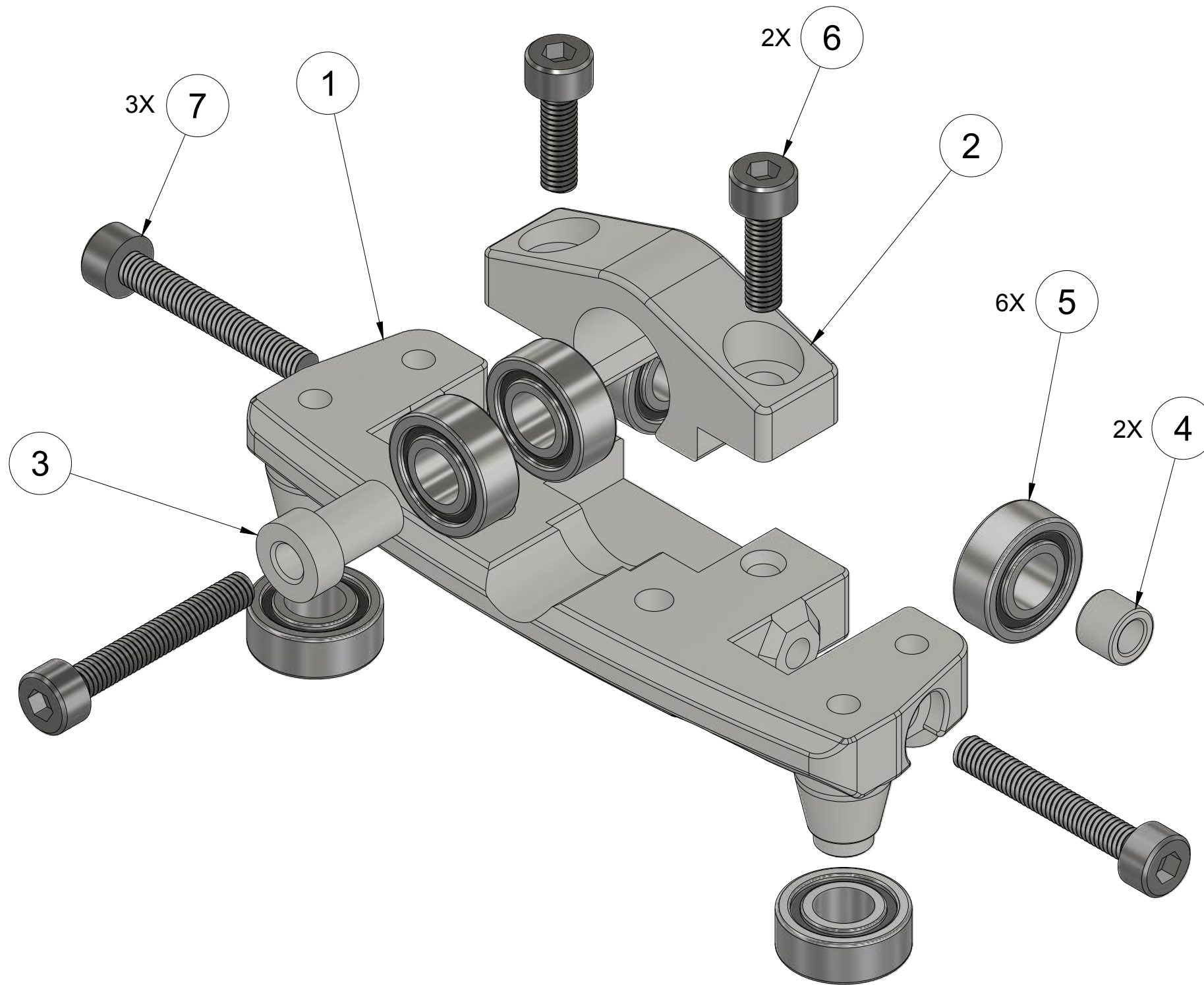
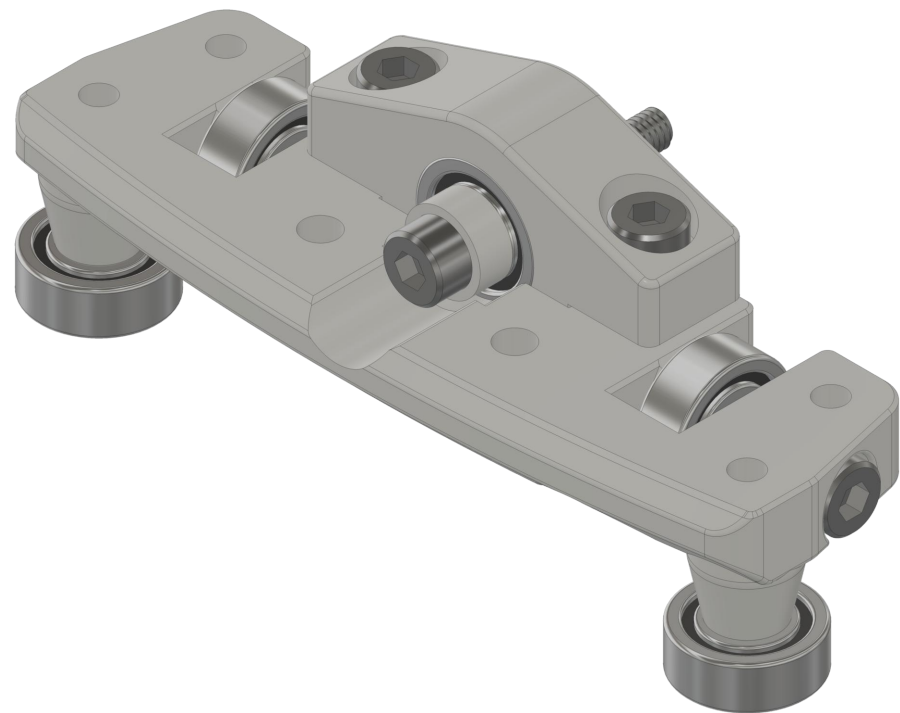
- 1. FULLY TAP BEFORE FASTENING.
- 2. TORQUE TO HAND TIGHT. DO NOT OVER TORQUE.
- 3. USE SAME ASSEMBLY PROCEDURE FOR BOTH LEFT AND RIGHT UPSTOP WHEEL HOUSINGS.

REAR UPSTOP ASSEMBLY

1 / 1

1 2 3 4 5 6 7 8

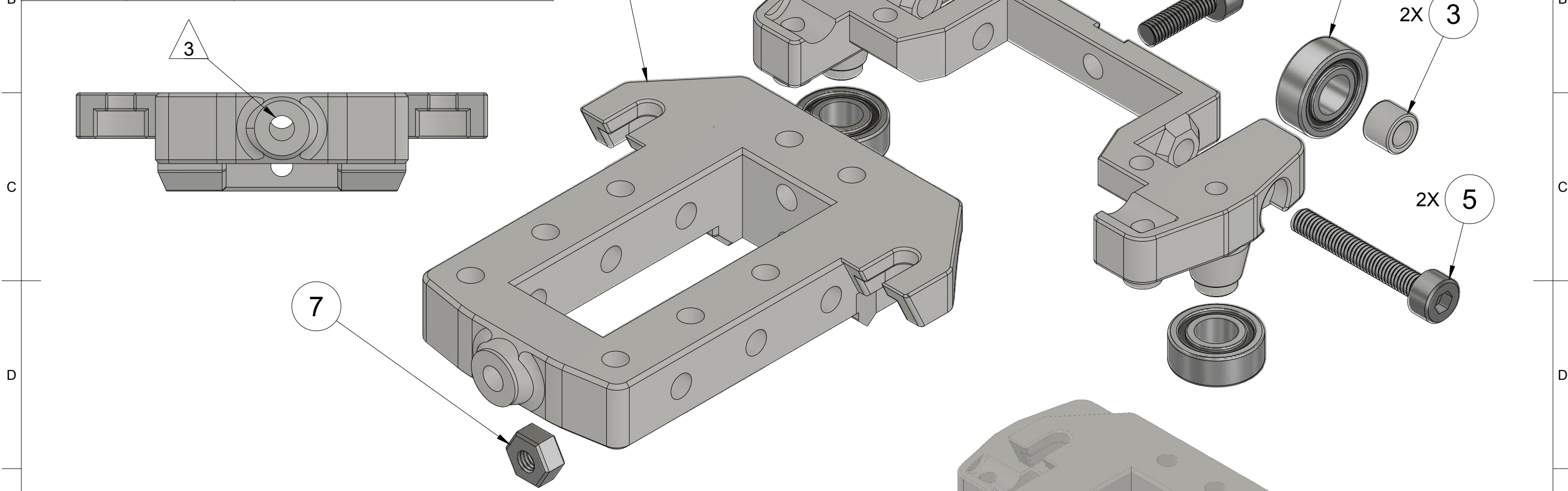
Parts List		
Item	Qty	Description
1	1	Front Wheel Housing
2	1	Bearing Cover
3	1	Roll Axis Shaft
4	2	Bearing Spacer
5	6	11x5x4 Bearing
6	2	M3X10
7	3	M3X20



NOTES:

1. ENSURE NECESSARY HOLES ARE FULLY TAPPED BEFORE FASTENING.
- REFER TO FRONT WHEEL HOUSING DRAWING, PAGE TWO.
2. TORQUE TO HAND TIGHT. DO NOT OVER TORQUE.

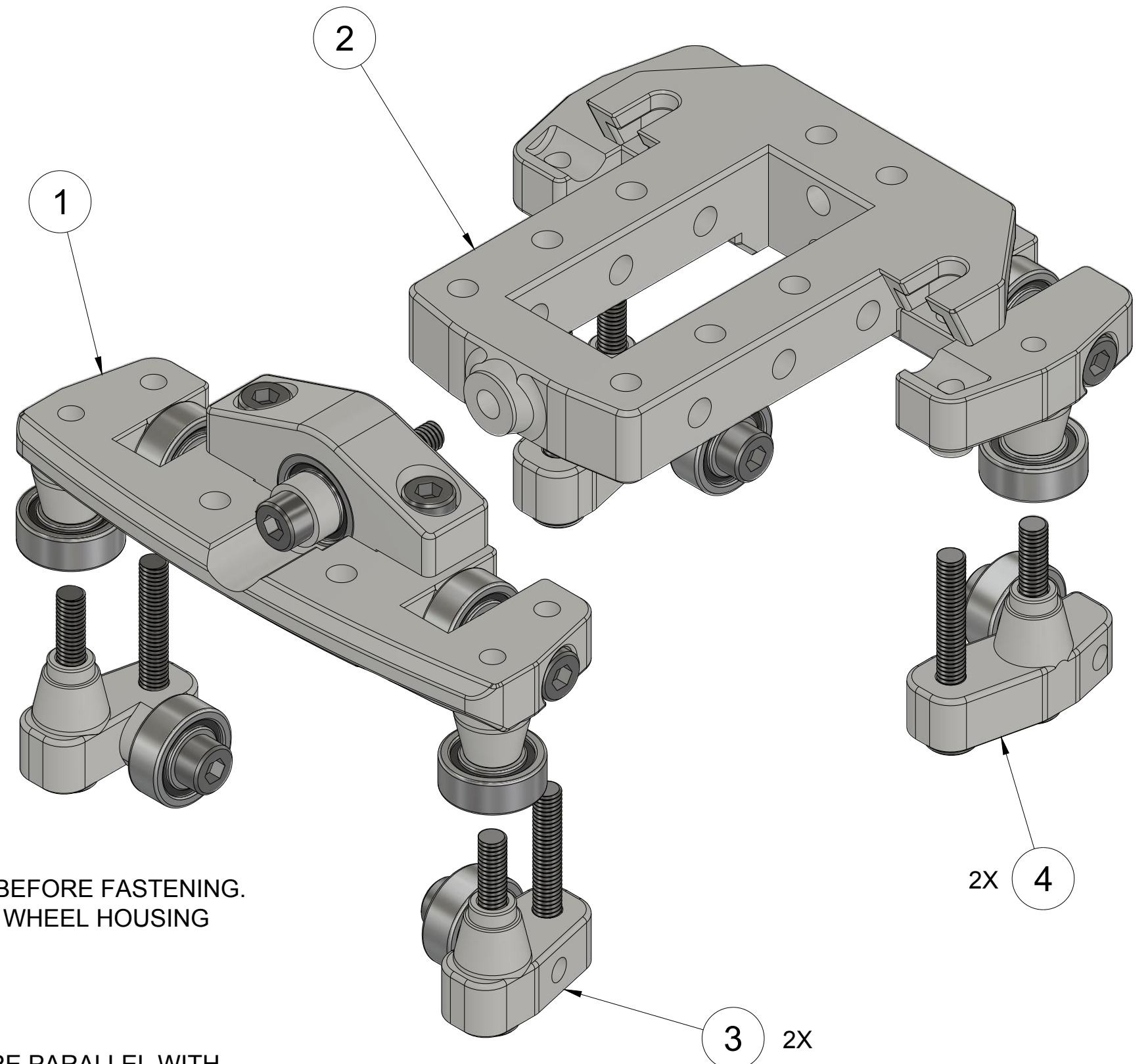
Parts List		
Item	Qty	Description
1	1	Rear Wheel Housing
2	1	Spine
3	2	Bearing Spacer
4	4	11x5x4 Bearing
5	1	M3X10
6	2	M3X20
7	1	M3 Hex Nut



NOTES:

1. ENSURE NECESSARY HOLES ARE FULLY TAPPED BEFORE FASTENING.
- REFER TO REAR WHEEL HOUSING AND SPINE DRAWING, PAGE TWO.
2. TORQUE TO HAND TIGHT. DO NOT OVER TORQUE.
3. INSERT M3 HEX NUT INTO SPINE SLOT AND VERIFY ITS CENTER IS CONCENTRIC WITH THE THRU HOLE.
4. ATTACH ITEMS 1 AND 2 WITH ITEM 6 PRIOR TO SECURING ITEMS 3, 4, AND 5.

Parts List		
Item	Qty	Description
1	1	Front Wheel Assembly
2	1	Rear Wheel and Spine Assembly
3	2	Front Upstop Assembly
4	2	Rear Upstop Assembly



NOTES:

1. ENSURE NECESSARY HOLES ARE FULLY TAPPED BEFORE FASTENING.
- REFER TO REAR WHEEL HOUSING AND FRONT WHEEL HOUSING DRAWING, PAGE TWO.
2. TORQUE TO HAND TIGHT. DO NOT OVER TORQUE.
3. VISUALLY INSPECT THAT UPSTOP ASSEMBLIES ARE PARALLEL WITH THE FRONT AND REAR WHEEL HOUSINGS.
4. VERIFY ALL BEARINGS ROTATE FREELY ONCE ALL SUBASSEMBLIES ARE INSTALLED.
5. ALL DIMENSIONS IN MILLIMETERS.

2X 4

3 2X

A
B
C
D
E
F

A
B
C
D
E
F

